

Contrast of different early-thinnings practices in a natural regenerated mixed stand

Felipe Bravo Oviedo 1, Pablo Sabín Galán 2, Cristóbal Ordóñez Alonso 1, Miren del Río Gaztelurrutia 1, Ricardo Ruiz Peinado Gertrudix 1, Andrés Bravo Oviedo 1, Beatriz de la Parra Peral 3.



Target in the pilot project

Enhance wood mobilization in mixed forests in Urbion model forest, focused in early thinnings.

Objective of the pilot project

To analyze the impact of thinning in tree growth and mushroom production in young and middle aged stands. Analyze and test new logging operation schemes.

SimWood activities

- ⦿ Instalation of experimetal site with different harvesting parameters
- ⦿ Generate experiences of new logging schemes.
- ⦿ Develop a dialogue document about logging operation practices-guideline
- ⦿ Dissemination of SimWood results among participating companies
- ⦿ Evaluation of early-thinning products

A



A Mixed forest of *Pinus sylvestris* and *Quercus pyrenaica*

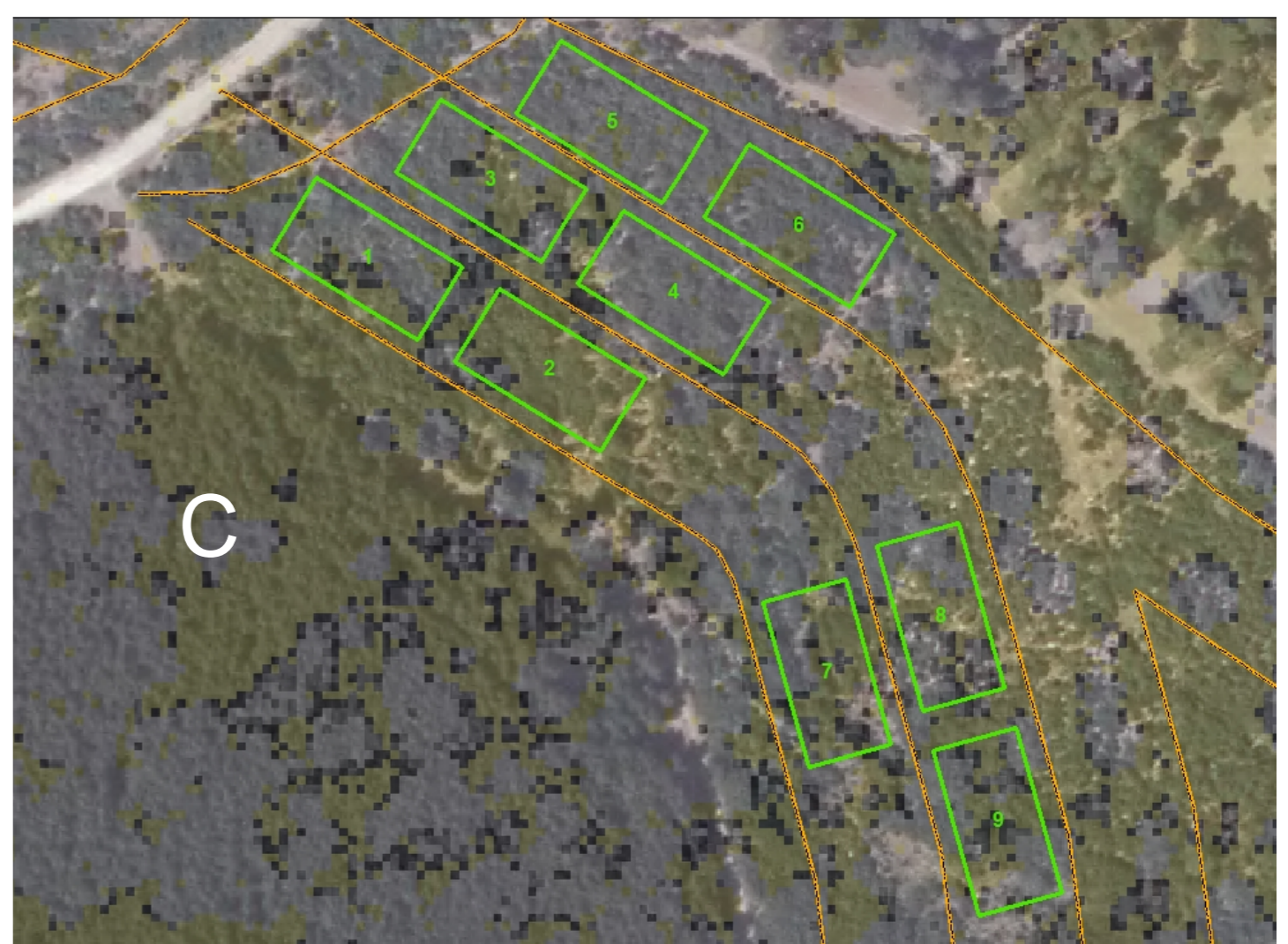
B Plot installation

C Lidar analysis of the expermental plots

D Testing harvesting trails with biobaler



B



C



D



Increase know-how in young forest growing stock, growth and the response to different thinning intensities and logging operations including impact on NWFP (mushrooms).

Analyze the influence in production of developing mixed forests instead of traditional monospecific pine forests.

Expected results

- ⦿ Enhance wood mobilisation in young pine forests by trying to convert non-commercial silvicultural operations into neutral or commercial thinnings.
- ⦿ Develop a more cost-effective silviculture to increase wood mobilization.
- ⦿ Improve knowledge of production in mixed forests.



<http://sostenible.palencia.uva.es/>
<http://www.agresta.org>

